

# RETIREMENT AUCTION

TIMED ONLINE

13410 Hwy 75 N,  
Georgetown, MN 56546

**OPENS: WEDNESDAY, AUGUST 18**

**CLOSES: WEDNESDAY, AUGUST 25 | 12PM**

PREVIEW: Wednesday, August 18 – Wednesday, August 25 by appointment. Contact Denis, 701.388.1822

LOADOUT: Wednesday, August 25 – Saturday, August 28 from 8:00AM-5:00PM.

## FORKLIFT, WHEEL LOADER & MOTOR GRADER

**Yale GC30 LP forklift**, 3,000 lb. lift, 2 stage, side shift, hard rubber warehouse tires,

(1) propane tank

**1972 Fiat-Allis 605-B tool carrier**, 3 spd., 2 yd. bucket, 15' automotive pallet forks, 17.5-25 tires

**Allis Chalmers 100B Series II motor patrol**, Allis diesel, 12' molboard, hyd. cable wing, 14-24 bar tires

## PICKUP & ATTACHMENT

**2002 GMC K2500 Sierra**, ext. cab, 4-door, 6L, automatic, 4WD, mounts for Boss snow plow, 356,000 miles, 40,000 miles on trans., 100,000 miles on motor, Salvage Title

**Boss hyd. V-plow**, 76", aux. lights

## VEHICLES

**2004 Grand Cherokee Overland**, leather, 4.7L V8, automatic, sunroof, setup for tow vehicle for motorhome, 133,251 miles, Salvage Title

**2003 Subaru Legacy L**, 4-door, AWD, 4 cyl., automatic, sunroof, 253,846 miles, Salvage Title

**1988 Mustang 2X convertible**, 2.3L, automatic, shows 70,869 miles

**1988 Mustang LX convertible**, 2.3L, automatic, parts only

## RECREATION

**2006 Country Coach Allure 430 motorhome**, diesel pusher w/tag axle, ISL Cummins 400 hp., Allison automatic 7 spd., engine brake, air ride, (4) slides, sleeps 6, ducted front/rear A/C, Whisper Quiet, security system, backup cameras, (2) power awnings, pull-down awnings on (3) slides, shower, vanity, dual pull-down shades, flatscreen TV, granite tops, convection oven, 3-way Norcold refrigerator/freezer, solid wood, heated tile flooring, 50 gal. fresh water tank, 50 gal. holding tank, diesel Genset, 50 amp, diesel boiler system, pre-engine heater, 11R24.5 tires on full aluminum rims, 63,000 actual miles, Salvage Title

**Honda Foreman Rubicon ATV**, 4x4, automatic, front & rear racks, shows 7,285 miles, No Title, Bill of Sale Only

**2002 Harley Davidson Road King**, single AWD, double seat, Benelli exhaust, big bore kit, leather saddle bags, faring, shows 90,121 miles

## SEMI TRACTOR & BOX TRUCK

**1996 IHC 9400 factory day cab**, Cummins M11 Plus, 10 spd., air ride, air slide 5th, twin aluminum fuel tanks, 11R22.5 tires on steel rims, shows 673,436 miles, Salvage Title, Title Will Be Delayed

**1979 Ford 800 twin screw tandem**, 429 V8, Eaton 5&2 spd., Logan 21' combination grain & potato box, hyd. front hoist, rear belted conveyor, 10:00-20 tires on spoke rims, shows 95,593 miles, Title Will Be Delayed

## IMPLEMENT TRUCK W/TILT BED

**2003 Kenworth T300 single axle rollback implement truck**, 3126 Cat, 7 spd., spring susp., Miller 21' steel rollback tilt bed, hyd. winch, rear wheel lift for 2-car hauler, (4) side compartment boxes, 255/70R22.5 tires on aluminum rims

## VAN TRUCKS

**1989 Freightliner van box truck**, L10 Cummins, 7 spd., spring ride, Pike 24' van body, roll-up door, rear pintle hitch, 11R22.5 tires on steel rims

## TRAILER

**Load Trail T15 HD tandem axle flatbed trailer**, 20', 2' beavertail, flip-up ramps, 235/85R16 tires on 8-hole rims, Title Will Be Delayed

## OTHER EQUIPMENT

**Toro Groundsmaster 325-D commercial front deck mower**, 4WD, 72" deck, power steering, full floating hitch, ROPS safety & cover, 4,100 hrs.

**Swisher pull-type lawn tractor**, 44" rugged cut, Briggs & Stratton 12-1/2 hp. gas motor, offset adj.

**ATV boom sprayer**, 6', 12v  
**Robinair A/C recycle machine**, for R-12 & R-134 tanks

## SHOP EQUIPMENT

**Hanmecson Lift PRO-V10 electric over hyd. floor shop hoist**, 10,000 lb., floor mount, adj. arms, S/N05102382

**Challenger 3900 electric over hyd. floor shop hoist**, 9,000 lb., floor mount, adj. arms, S/N3911766

**Lincoln SP-135T wire welder**

## ESAB Migmaster 250 wire welder

**Military SF10-D generator**, 10kw, Hercules gas motor, remfg.

**Saylor Beall upright air compressor**, 60 gal., 5 hp., 1 phase

**Delta upright air compressor**, 80 gal., 6-1/2 hp., 1 phase

**John Bean VPI System III programmable high spd. tire balancer**, w/weights

**Auto tire changer**, air & electric operated

**Electro-Magic hot water power washer/steamer**, hose reel

**Oxyacetylene torch cart w/gauges**

**Craftsman upright, middle, & lower tool cabinets**, w/hand tool inventory

**(2) Steel multi-drawer toolboxes**, w/misc. hand tools

**DeWalt 18v power tools**

**Mac 1/2" air tools**

**15 gal. oil recovery station**

**A/C Pro manifold gauge set**

**Bostitch air frame nailer**

**93980 bearing puller set**

**Bench grinder**

## PARTS, FARM SUPPORT & MISC ITEMS

**Briggs & Stratton water pump**, 2", w/suction & discharge hose

**Monarch water pump**, 2", New

**Rotodel oil transfer pump**, 1/3 hp., 1 phase, w/suction & discharge hose

**Submersible water pump**, 1/4 hp., New

**Robinair vacuum pump**

**Inductor Glass Blaster induction heater for windshields**

**Hardi 30 gal. gas caddy**, 12v pump

**Set of 17.5-25 tires for payloader**

**Used tire inventory**

**Asst. chains & binders**

**Barrel carts**

**HD caster wheel cart**

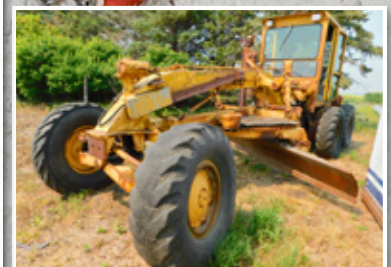
**(12) Wood rafters**, 23', 4/12 pitch, stored inside

**Steel pallet racking**: (5) sections 8'x8' adj. & (5) sections 8'x10' adj.

**(9) Display & parts racking**, double-sided, adj.

**Office equipment to include**: desks, chairs, file cabinet, computer, Deskjet printer, scanner printer

**No. 22 Iceless antique refrigerator**, oak finish



*All Parts Pickup & Auto* Denis Kadrie, 701.388.1822  
or Brad Olstad at Steffes Group Inc., 701.237.9173 or 701.238.0240

Steffes Group, Inc., 2000 Main Avenue East, West Fargo, ND 58078 | 701.237.9173 | SteffesGroup.com

TERMS: All items sold as is where is. Payment of cash or check must be made sale day before removal of items. Statements made auction day take precedence over all advertising. \$35 documentation fee applies to all titled vehicles. Titles will be mailed. Canadian buyers need a bank letter of credit to facilitate border transfer. Scott Steffes MN14-51, Brad Olstad MN14-70, Max Steffes MN14-031, Justin Ruth MN14-041